



Reconciling the  
Customary  
Practices of  
Indigenous  
Palawan People  
with the  
Management  
of Mt.  
Mantalingahan  
Protected  
Landscape,  
Palawan,  
Philippines

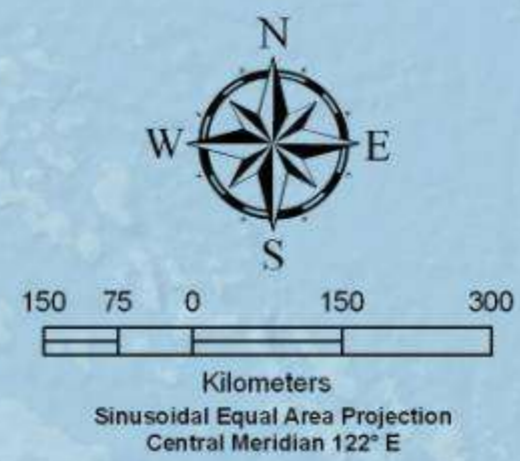
---

Jeanne G. Tabangay  
Project Manager  
CI-Philippines

---

CONSERVATION  
INTERNATIONAL





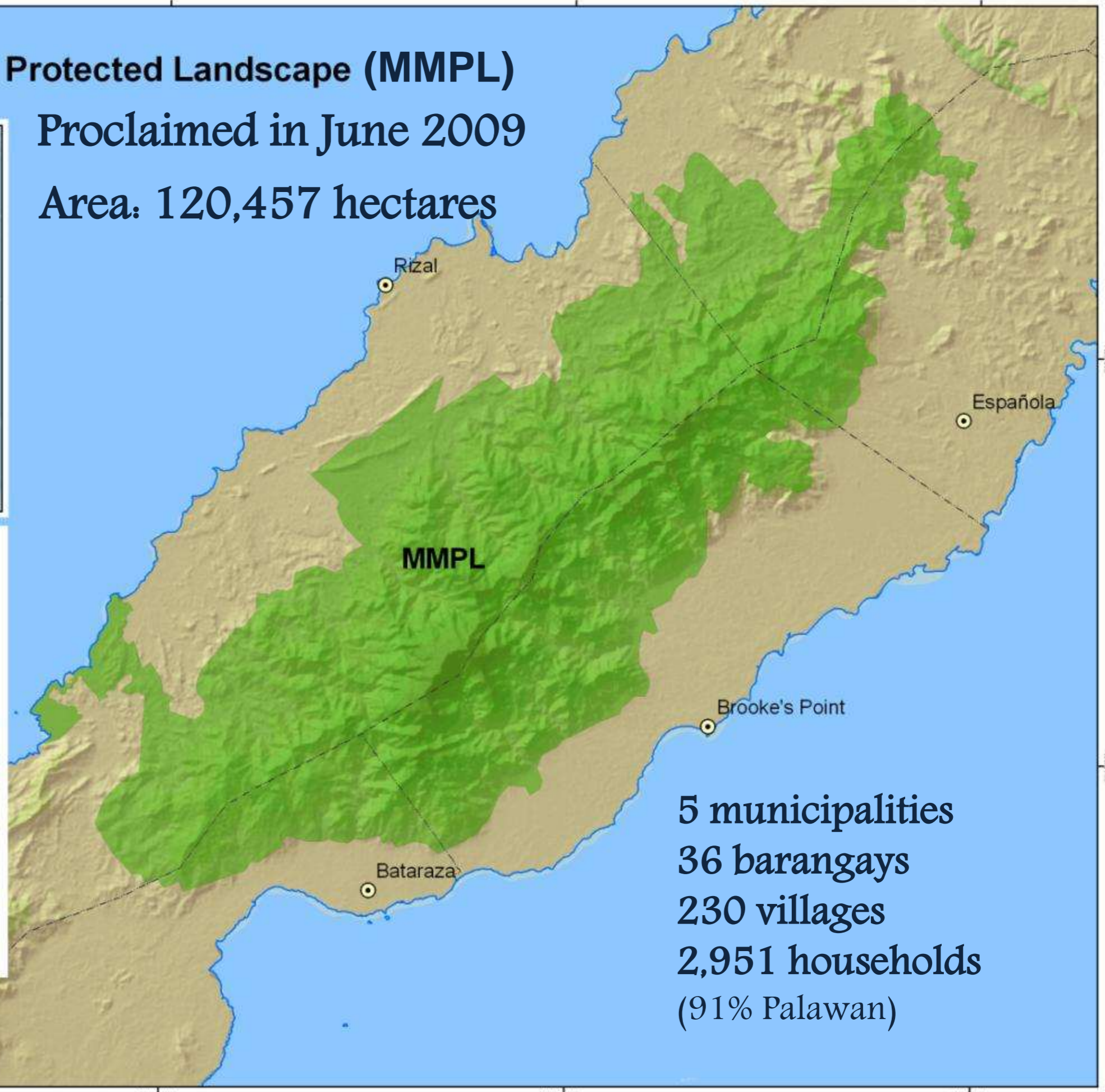
- Legend**
- project site (marine)
  - project site (terrestrial)
  - key biodiversity area
  - marine biodiversity corridor
  - terrestrial biodiversity corridor

**Mt. Mantalingahan**

# Mt. Mantalingahan Protected Landscape (MMPL)

Proclaimed in June 2009

Area: 120,457 hectares



5 2.5 0 5 10



Sinusoidal Equal Area Projection  
Central Meridian 122° E

### Legend

- municipality
- municipal boundary
- coastline
- mt. mantalingahan pl

5 municipalities  
36 barangays  
230 villages  
2,951 households  
(91% Palawan)

# Why is Mantalingahan Important?

Forest cover: 79%

11 vegetative cover types

Plants: 861 species

Mammals: 35 species

Birds: 90 species

Reptiles: 30 species

Amphibians: 14 species

Globally threatened: 23 species

New Discoveries: at least 11 species  
(both flora & fauna)



*Coelogyne*



Palawan soft-furred mountain rat  
*Palawanomys furvus*



*Saccolaimus saccolaimus*



*Medinilla sp.*



Pin-tailed parrot finch  
*Erythrura prasina*

# Why is Mantalingahan Important?

Total Economic Value: US\$ 5.6 B

## 1. Direct Uses

Water

Timber

Occupants' land-based livelihood

Occupants' river-based livelihood

Ecotourism

## 2. Indirect Uses

Carbon stock

Soil conservation

Soil fertility maintenance

Watershed and biodiversity functions

Protection of coastal & marine  
ecosystems

Ecosystem services of tropical forests

Recreation



# Why is Mantalingahan Important?



life

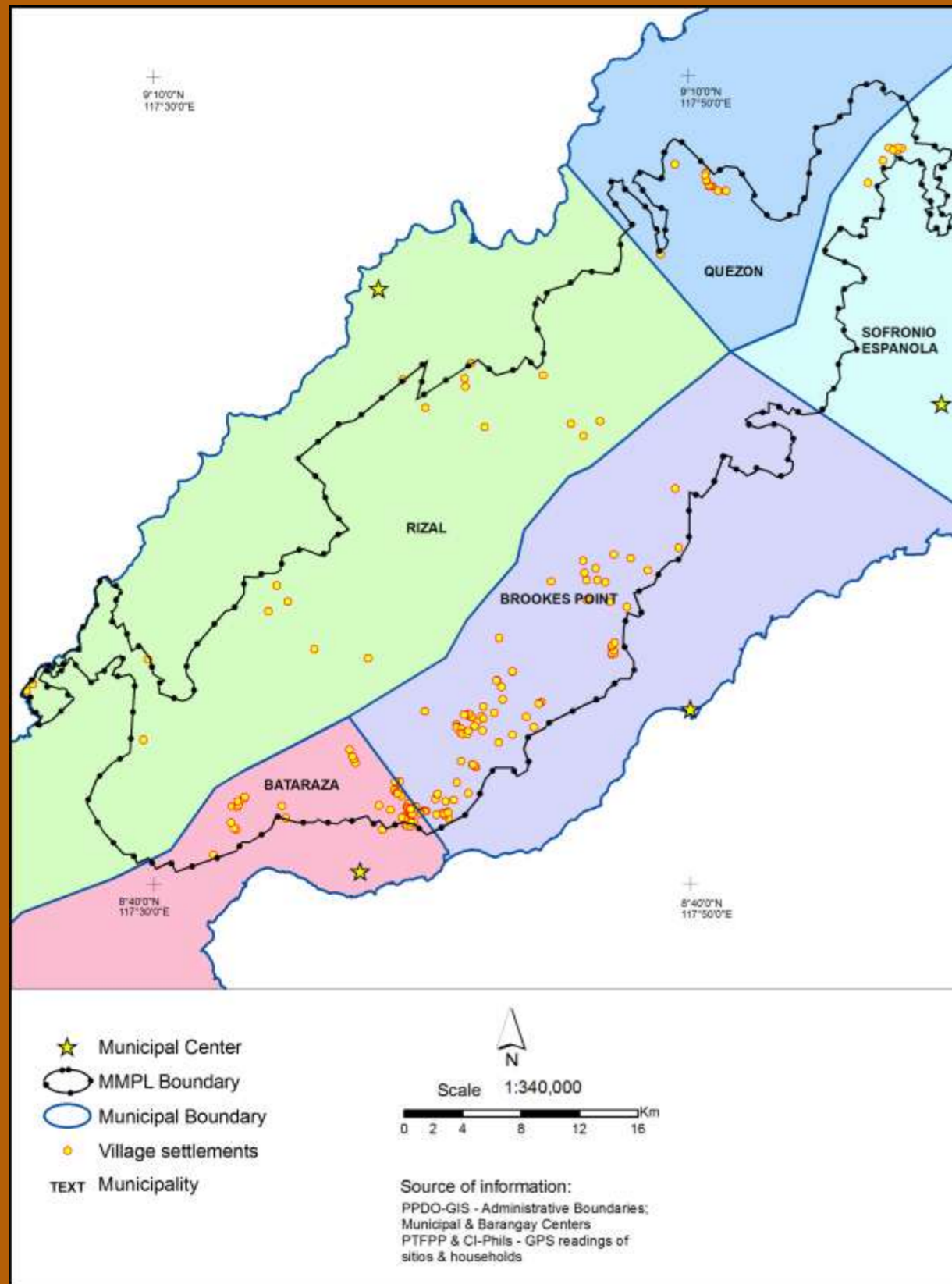


home



future

# MMPL: Home of Indigenous Palawans

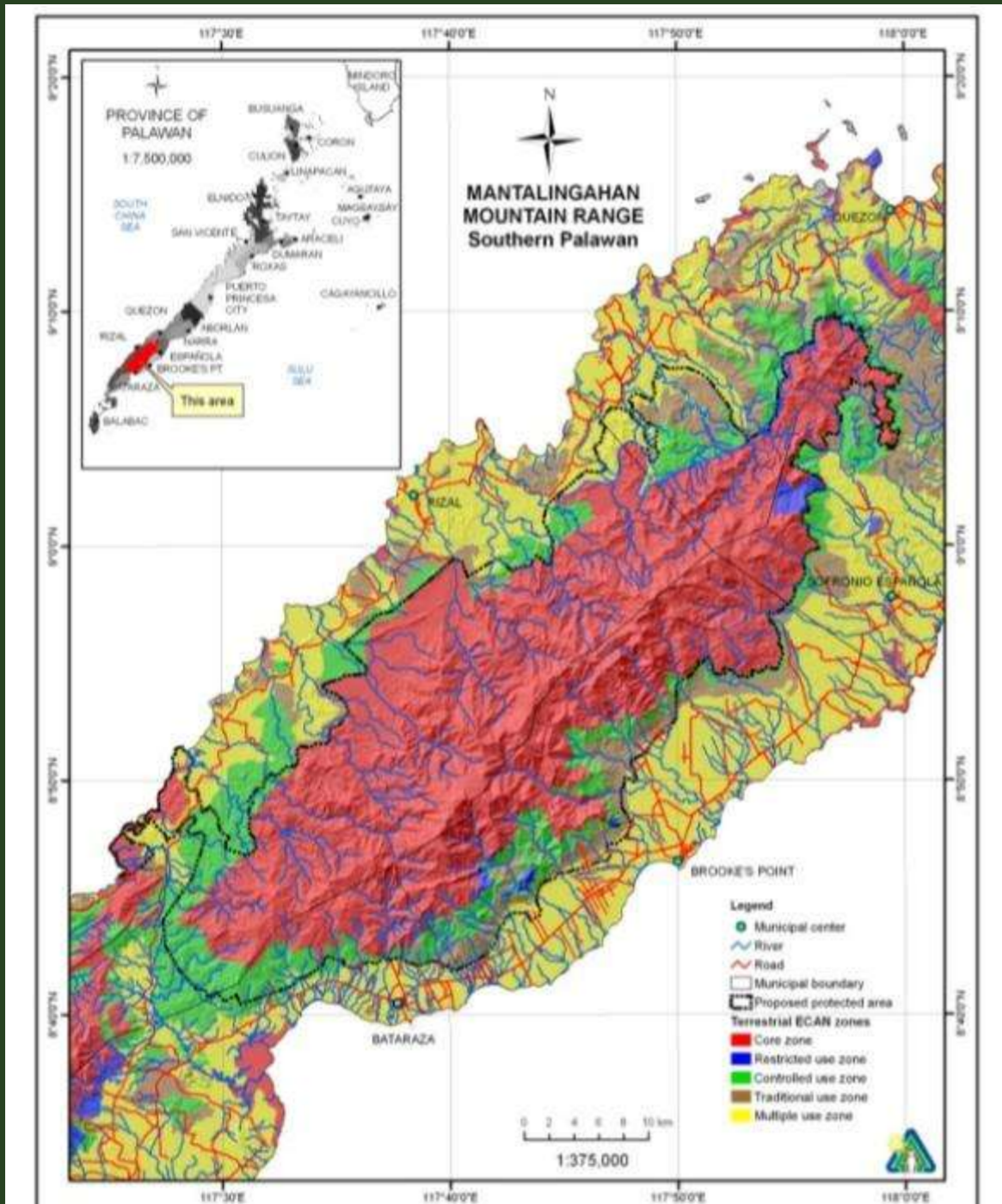


MMPL occupants comprise 15% of the total IP population in 5 municipalities

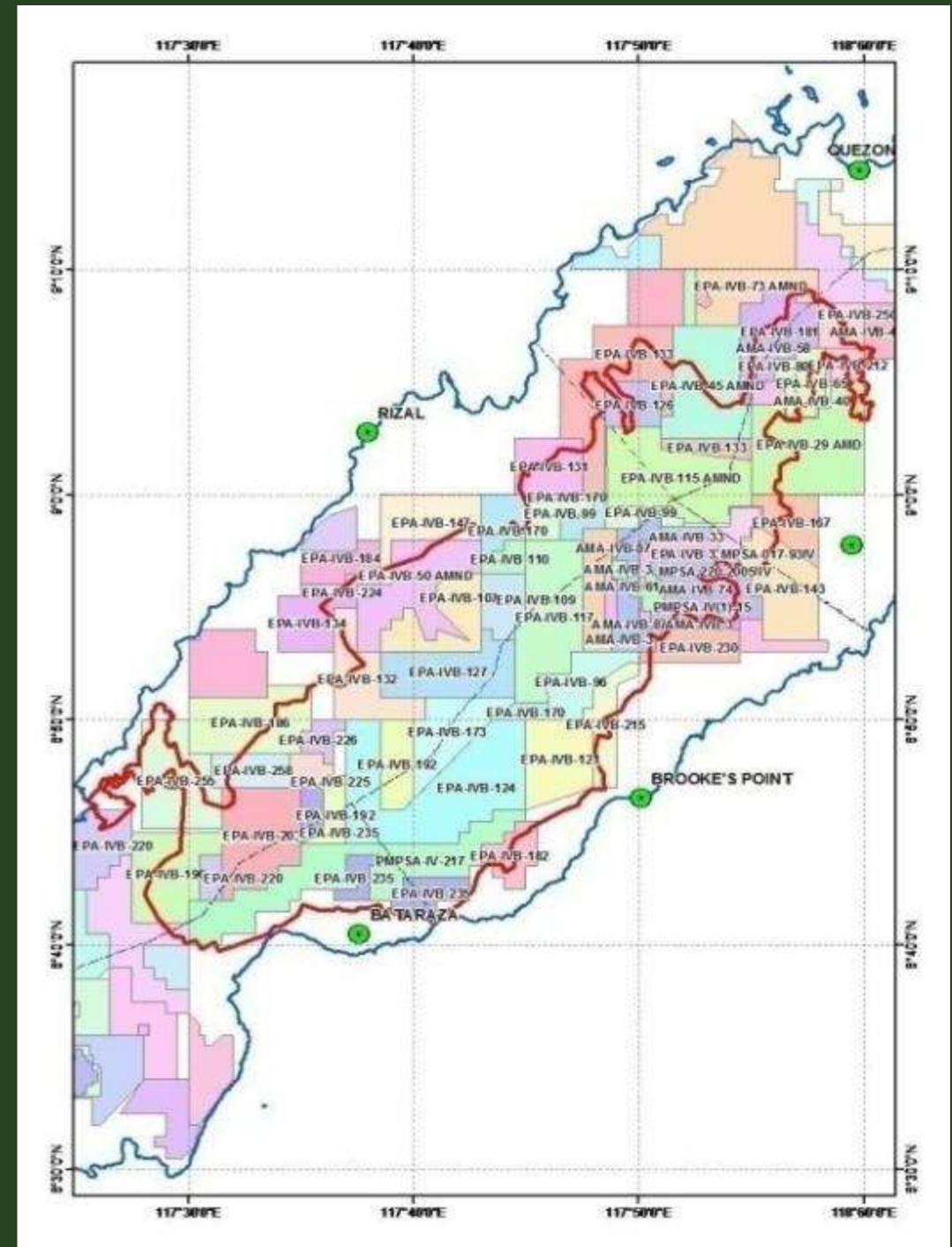
Traditional Sources of Subsistence:

swidden  
hunting  
gathering of wild  
food sources

# The Major Threat



or



Protect the ancestral home?

Displace the IPs?



# Gaining the Support of the Indigenous Palawans



230 upland villages in 36 brgys in 5 municipalities



# MMPL Management

MMPL is managed by a Protected Area Management Board (PAMB)

- multi-sectoral (including IPs)
- composed of 71 members
- affirmed by the DENR Secretary
- guided by an adopted operations manual



# MMPL Management & Business Plan

Adopted through PAMB Resolution 2010-01



participatory

community-based

integrative

# MMPL Community Development Programs

rights



tenure



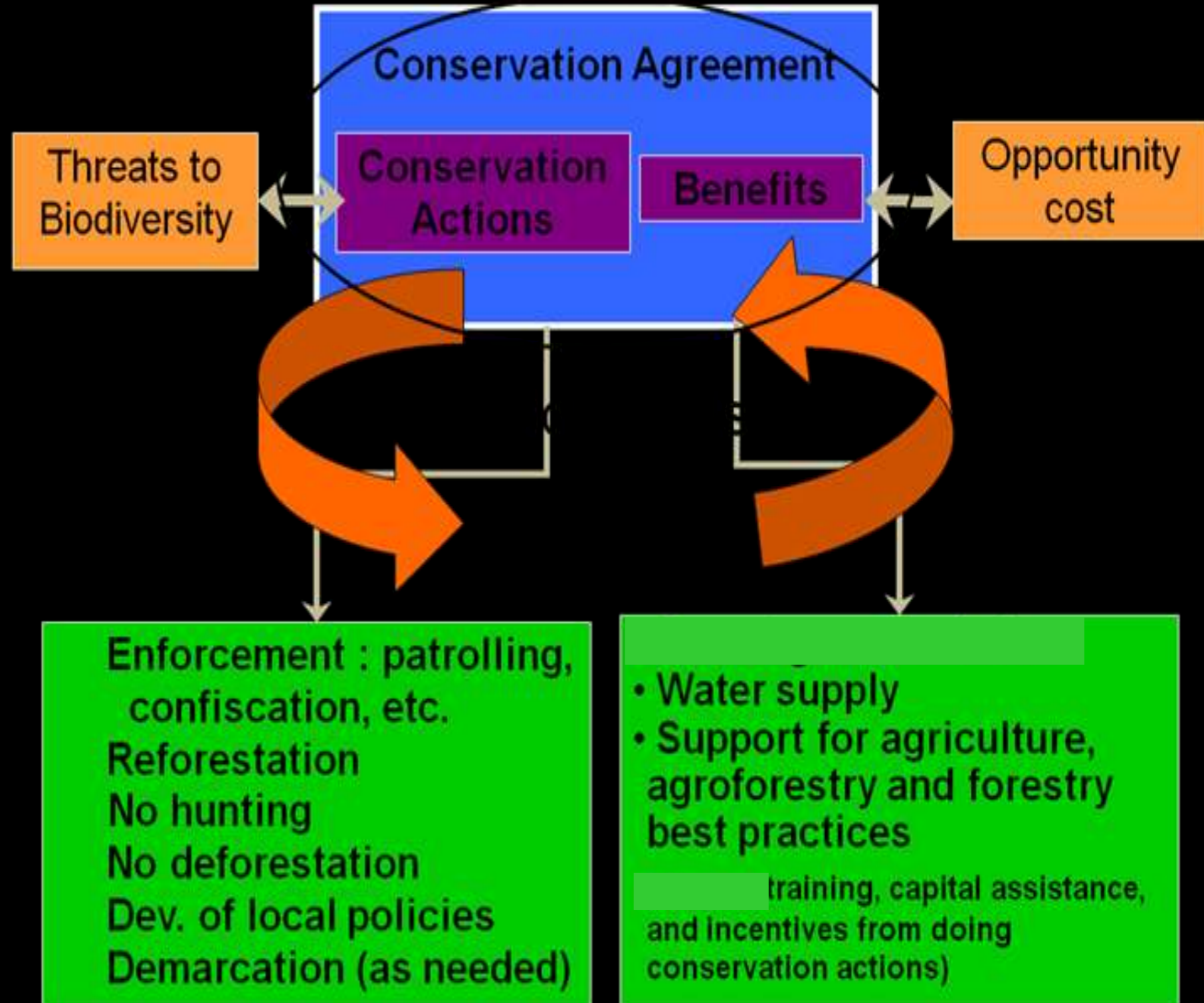
ecosystem services



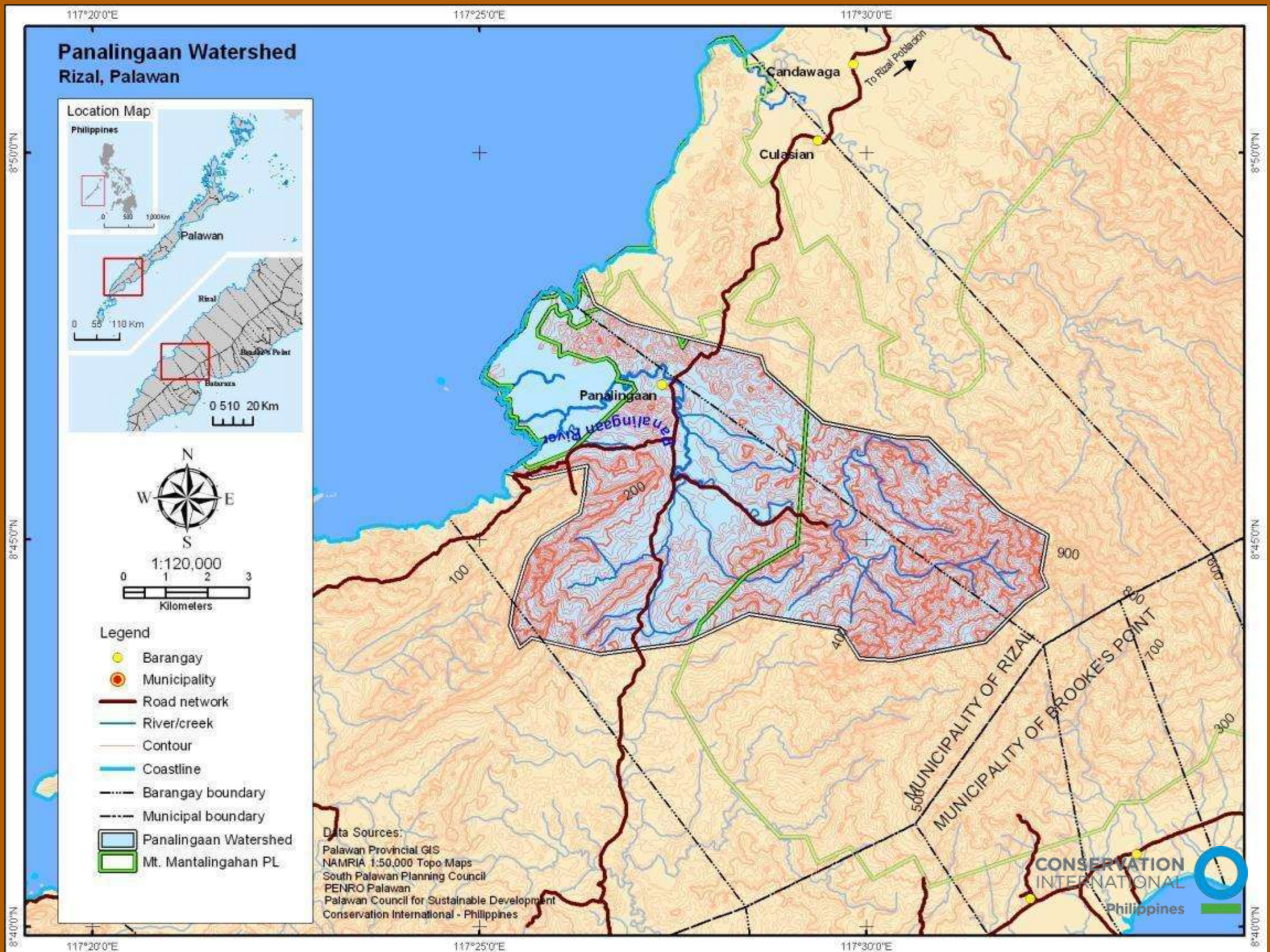
economic benefits



# Conservation Agreements



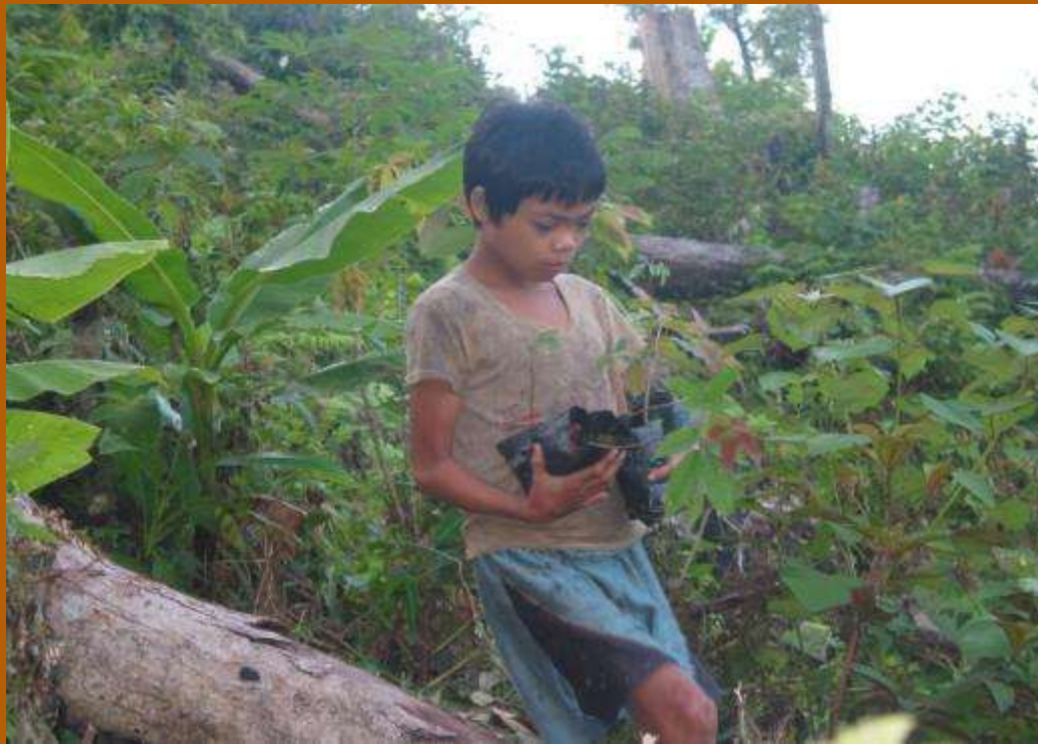
# Site 1. Panalingaan watershed



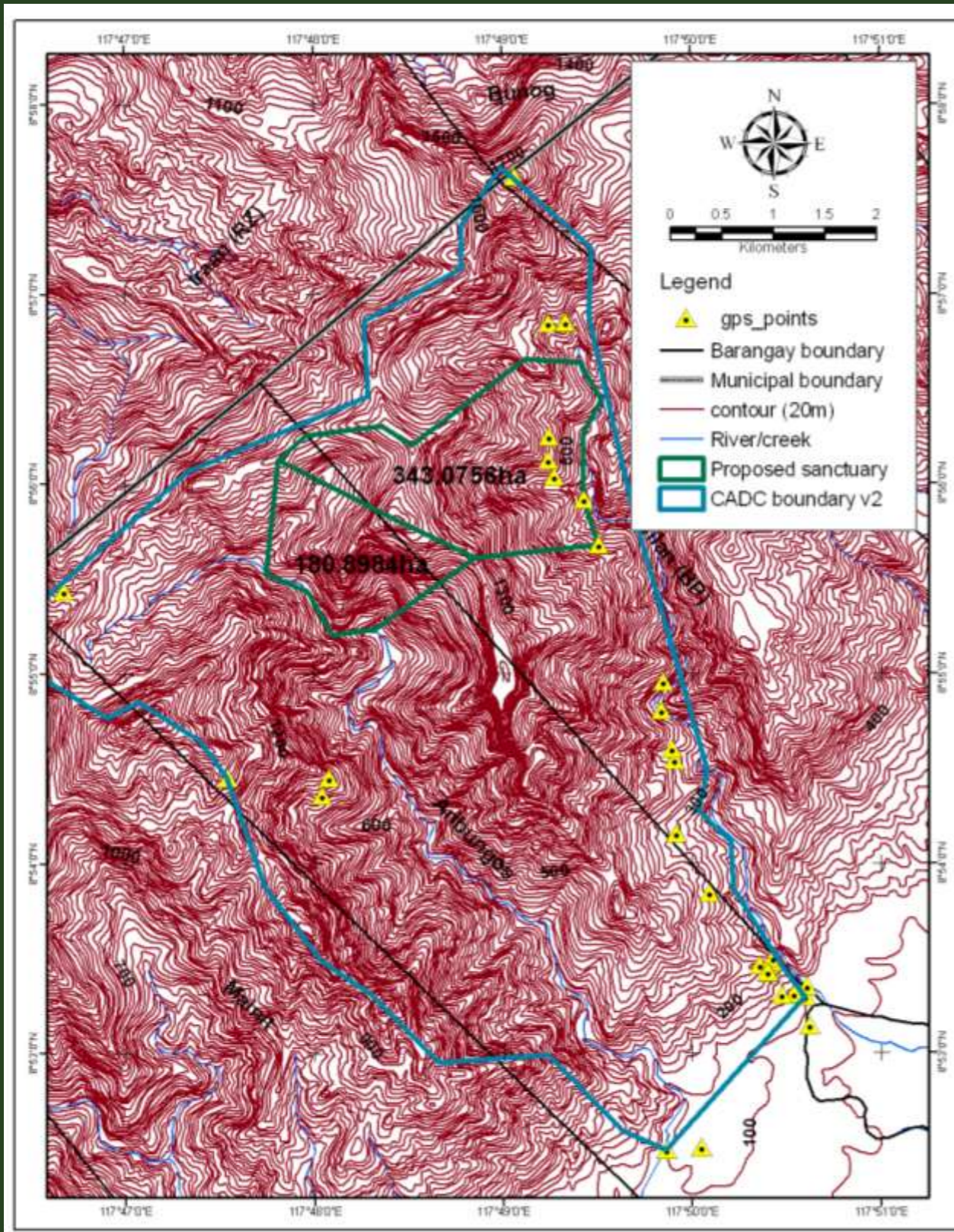
# Site 1. Panalingaan watershed

## Conservation Actions

## Benefits

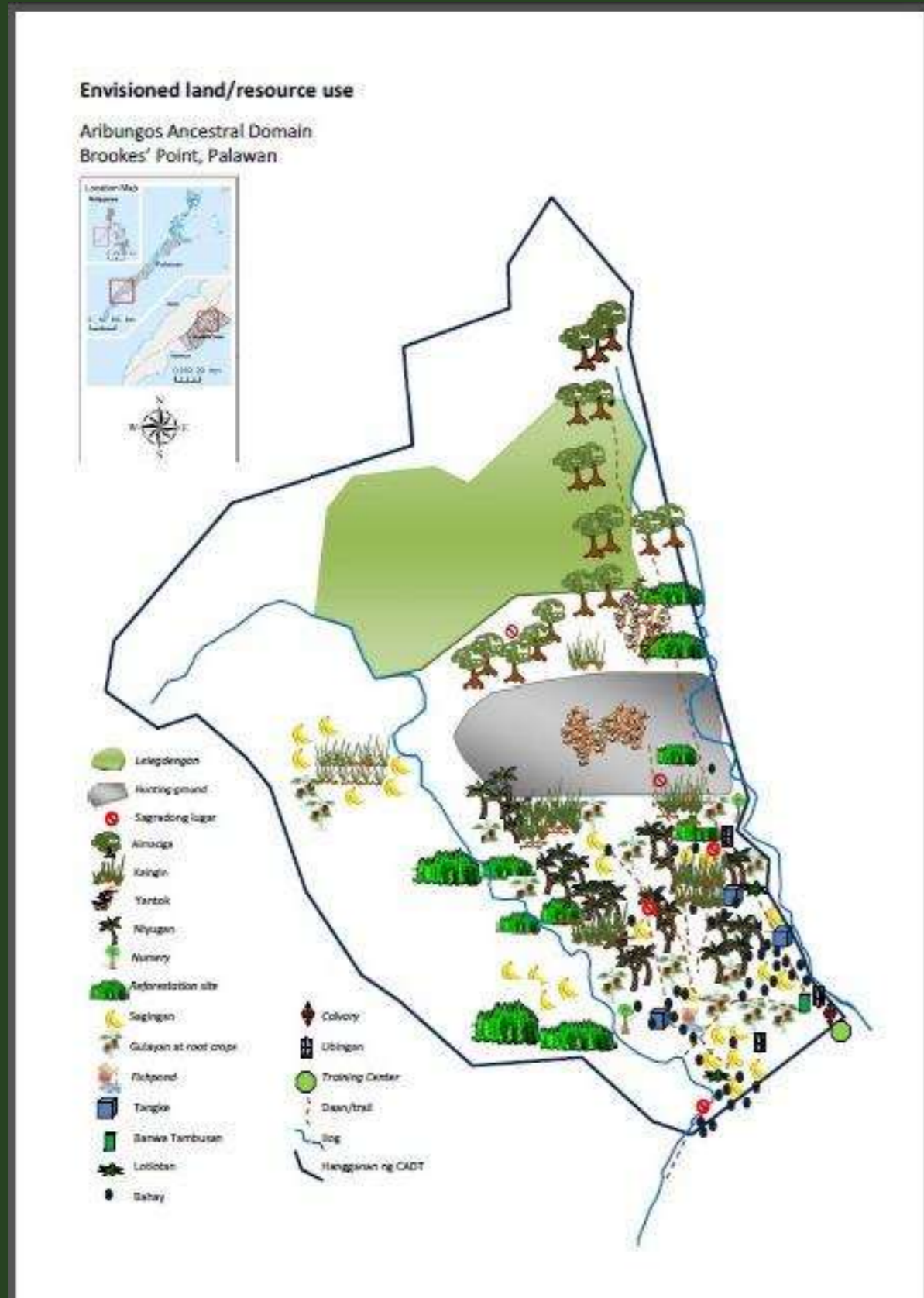


# Site 2. Aribungos and Ipilan Ancestral Domain





# Site 2. Aribungos and Ipilan Ancestral Domain



# Site 2. Aribungos and Ipilan Ancestral Domain

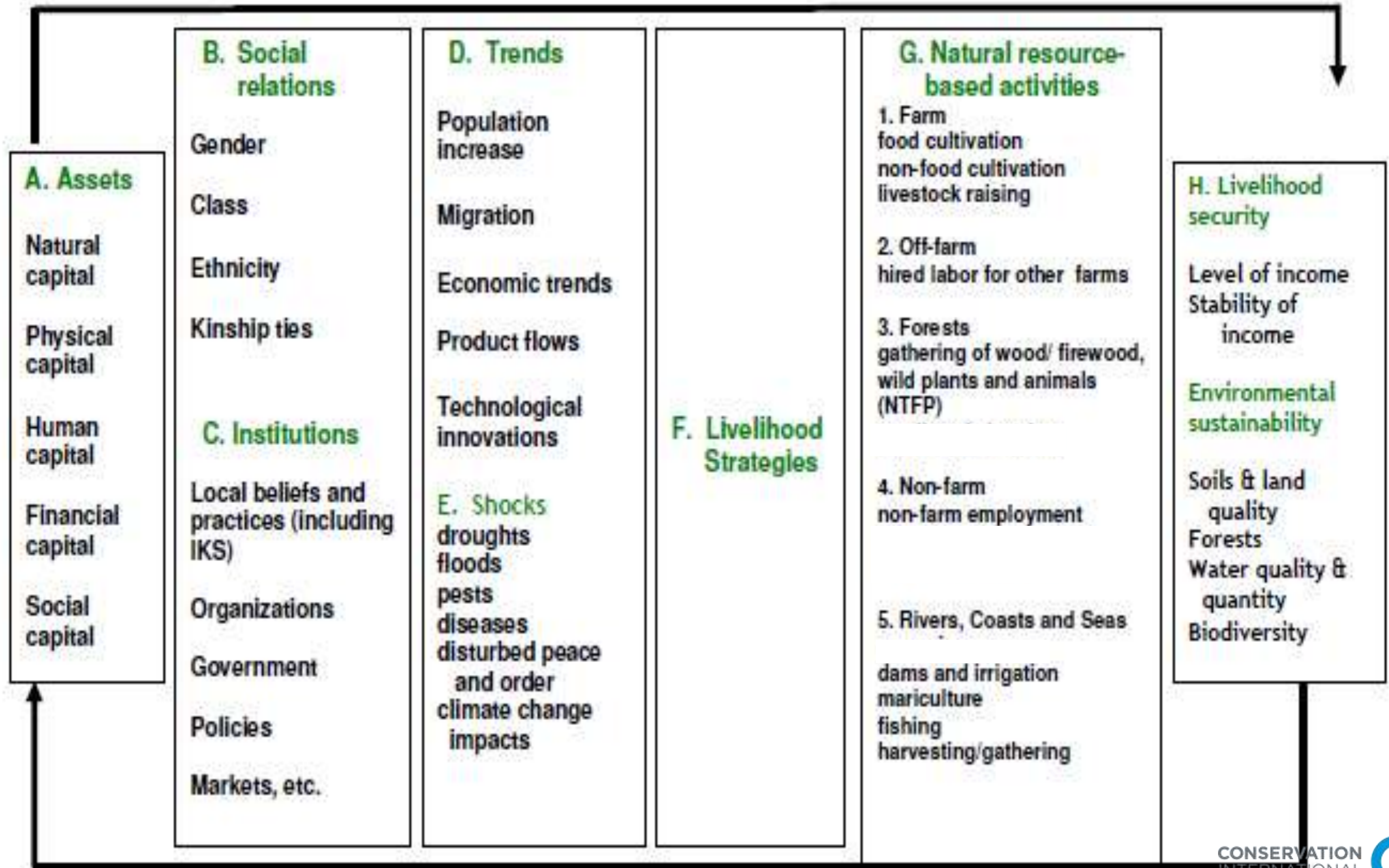
## Conservation Actions

## Benefits



# Assets-based framework to understand the link between human wellbeing and natural resource management

Livelihood Building Blocks	Access Influenced by	In Context Of	Resulting In	Composed of	With Effects on
----------------------------	----------------------	---------------	--------------	-------------	-----------------



# Healthy Ecosystems & Human Well-Being



## human well-being

- At least 600 households engaged as conservation stewards with additional household income
- Indirect beneficiaries: lowland farmers, fisherfolks



## ecosystem services

- water supply
- carbon sequestration
- controlled soil erosion and flooding
- (fisheries)



## healthy ecosystems

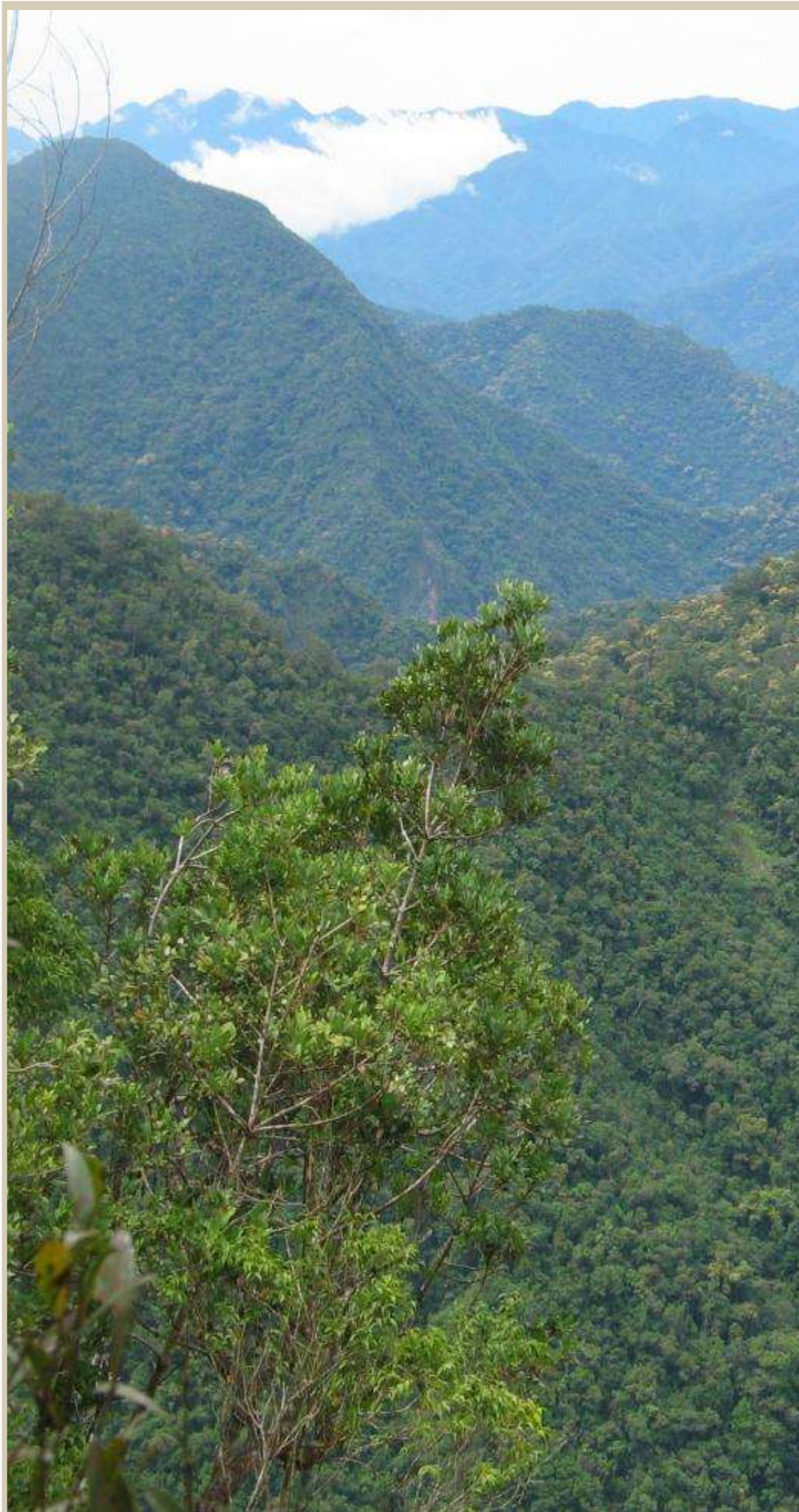
- 120,457 hectares placed under formal management
- at least 23 threatened species being protected



# Our work has just begun...

With stronger partnerships and thorough understanding of the deep connection between the people and Mantalingahan, we envision to accomplish more in the years to come, keeping our vision of a healthy ecosystem for the well-being of the people of Palawan





*dakélang  
salamat  
dimyo  
génsan*

